

**METROLINK**  
Integrated Transport. Integrated Life.

## Procuring Ireland's Megaproject

ICE Webinar

April 2025



Rialtas  
na hÉireann  
Government  
of Ireland

Tionscadal Éireann  
Project Ireland  
2040



# PRESENTATION OVERVIEW

- Project Development Routemap and Pillars of Effective Procurement
- What is MetroLink?
- Benefits and Outcomes
- Engaging the market
- Packaging the programme
- Contracting models
- Route to market (transaction)
- Managing performance



**METROLINK**  
Integrated Transport. Integrated Life.

# Overview of Project Routemap & Pillars of Procurement



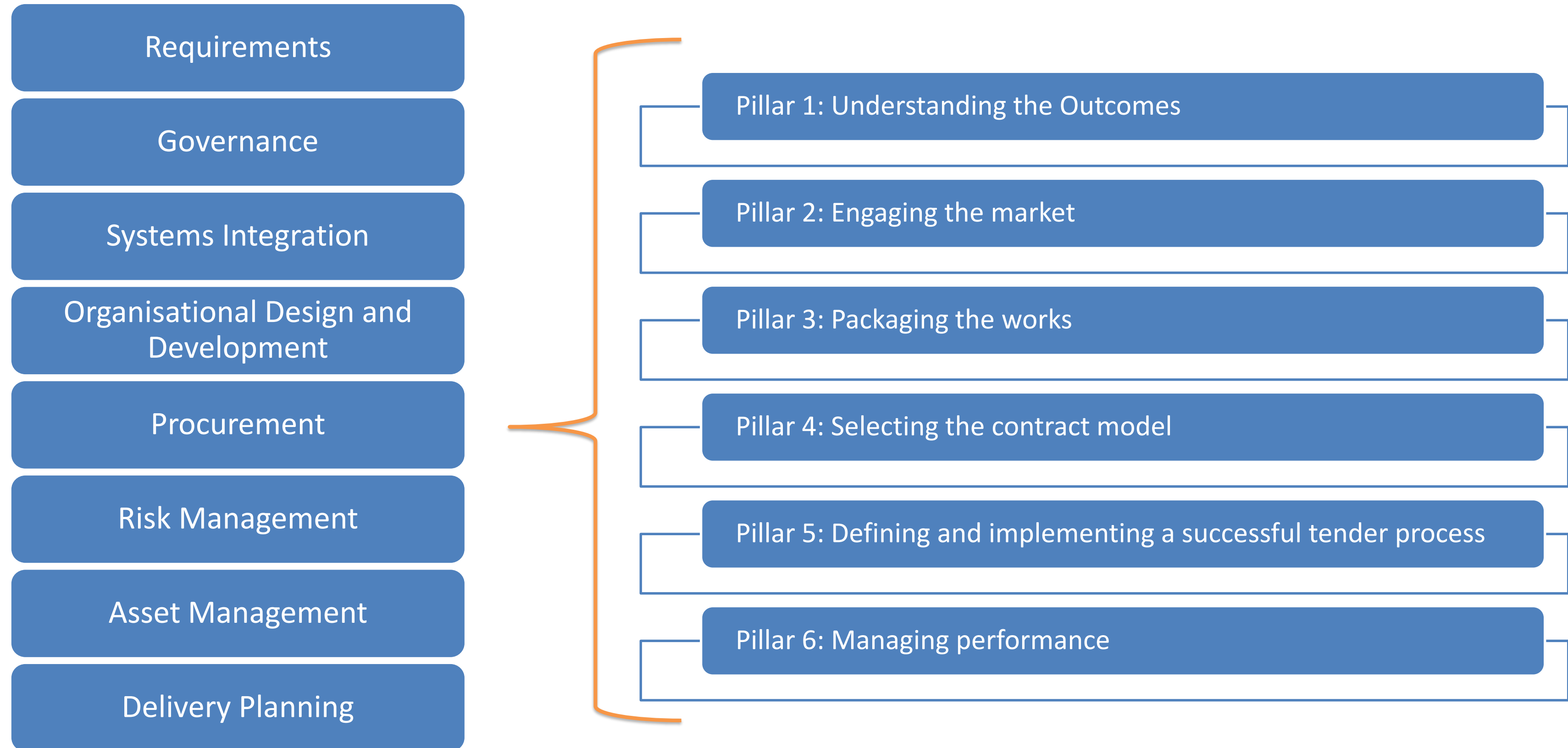
# INFRASTRUCTURE AND PROJECT AUTHORITY'S (IPA) PROJECT ROUTEMAP

---





# IPA ROUTEMAP MODULES & 6 PILLARS OF EFFECTIVE PROCUREMENT





**METROLINK**  
Integrated Transport. Integrated Life.

**What is MetroLink?**



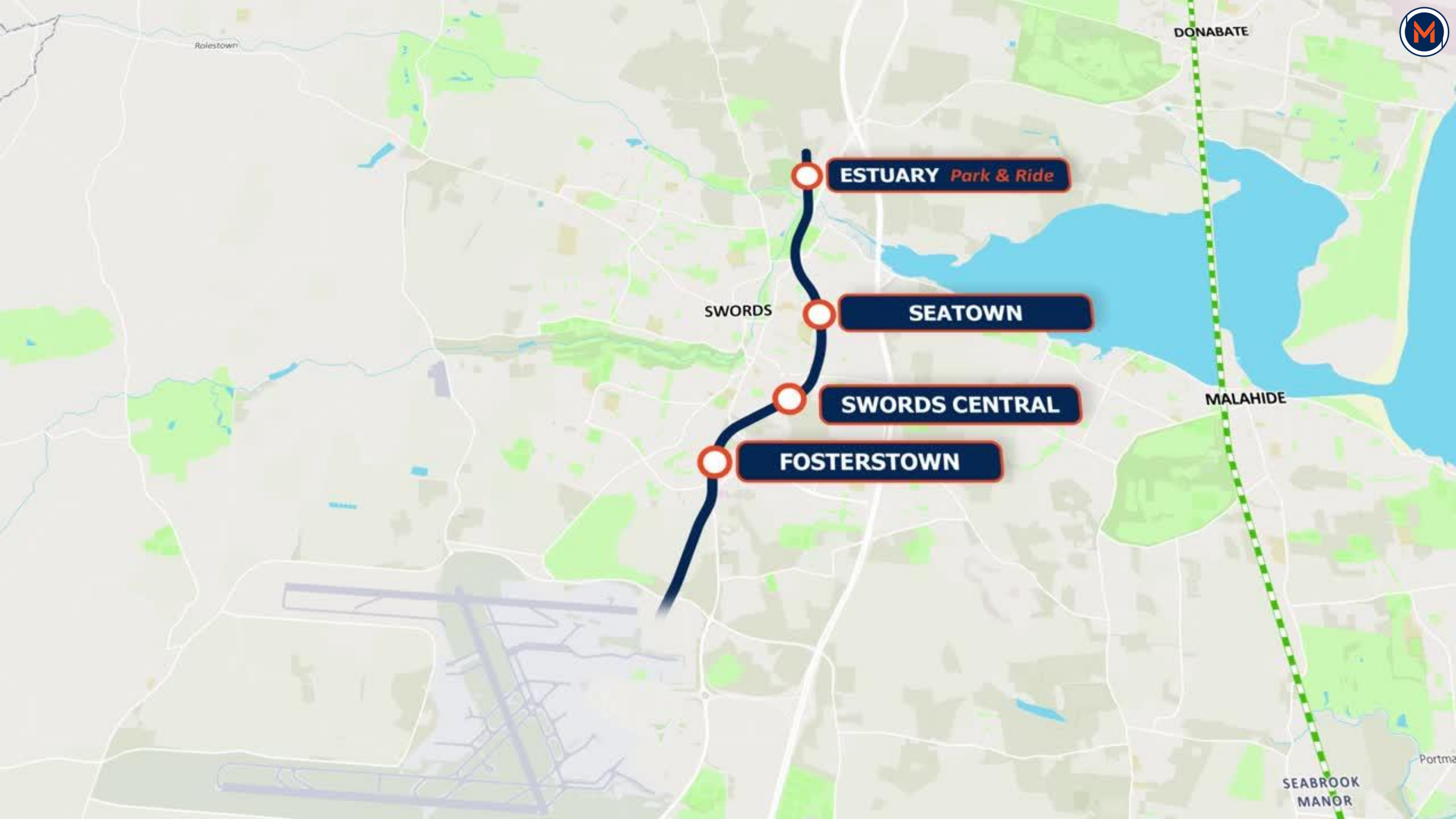
Rialtas  
na hÉireann  
Government  
of Ireland

Tionscadal Éireann  
Project Ireland  
**2040**

# WHAT IS METROLINK?

- High-capacity, high-frequency, modern and efficient rail line
- Fully electrified, carbon-neutral, automated trains
- Ireland's first megaproject
- Key scheme in the GDA's transport strategy
- 16 stations linking seamlessly with Irish Rail, Dublin Bus and Luas
- 20,000 passengers per hour each direction
- Swords to Dublin city centre in 25 minutes





**ESTUARY** *Park & Ride*

**SEATOWN**

**SWORDS CENTRAL**

**FOSTERSTOWN**

DONABATE

SWORDS

MALAHIDE

SEABROOK  
MANOR

Portma

# METROLINK KEY MILESTONES



Preliminary Business Case Approval

Q2 2022

Q3 2022



An Bord Pleanála

Railway Order Process



Railway Order Application granted

Late 2025



Q1 2019

Q4 2022

Q3 2023

Mid 2030s  
MetroLink  
Operational

Preferred Route  
Public Consultation

AW and CP  
appointments

Tender and contract document development





**METROLINK**  
Integrated Transport. Integrated Life.

# Pillar 1: Benefits and Outcomes

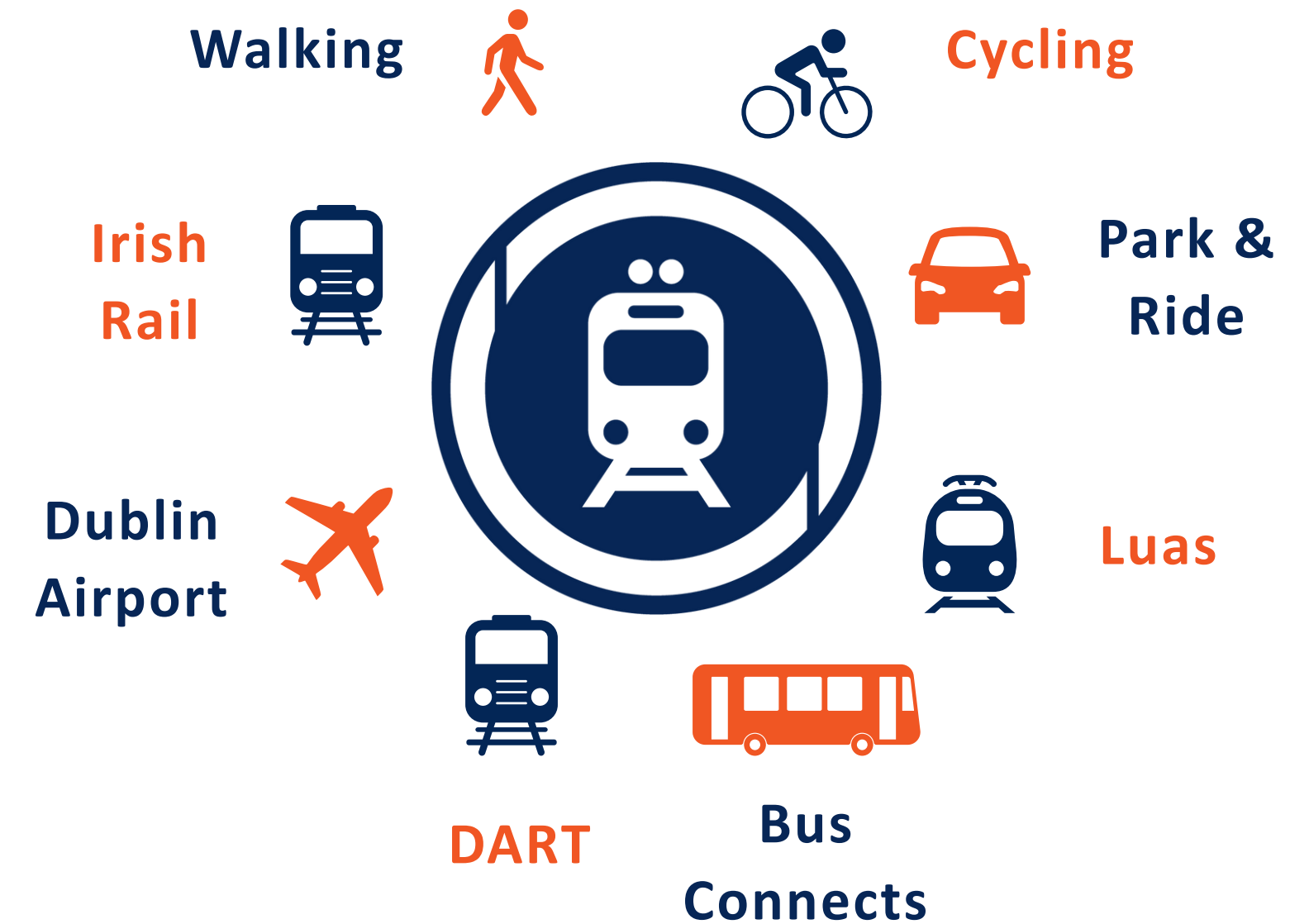


Rialtas  
na hÉireann  
Government  
of Ireland

Tionscadal Éireann  
Project Ireland  
**2040**

# WHAT IS THE NEED FOR METROLINK?

- Ireland is outgrowing its current transport infrastructure
- Dublin is ranked as the 3<sup>rd</sup> most congested European city
- A Dublin commuter will, on average, spend 213 hours a year in traffic
- In 2040, Dublin's projected population = 1.4 million
- Estimated that congestion and lost time will cost the Irish economy over €2 billion per annum in 2033 (EFEU, 2017)





# HOW WILL METROLINK BENEFIT IRELAND?



Frees up roads for essential journeys



Direct route from Dublin Airport for onward travel



Connects 127 schools, 3 third level Institutions & 5 hospitals



Boosts Ireland's economic activity



Unlock planning potential for almost 9,500 hectares\* of land, within a 2.5km radius of its stations



Creates over 8,000\* construction jobs per annum



\* Figures as per Preliminary Business Case approved in July 2022.



# PILLAR 1 METROLINK

- Preliminary Business Case Approved
- EIAR and Railway Order Submitted
- Sustainability Plan and Benefits Realisation Plan
- Sustainable Procurement Implementation Plan

## **MetroLink Business Case**

- Vision
- Mission

## **MetroLink Value Profile**

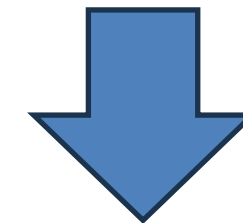
- Priority Themes
- Critical Success Factors

## **MetroLink Benefits Realisation Plan**

- Critical Success Factors (operations)

## **MetroLink Sustainability Plan**

- KPIs – Delivery phase and Operations stage



All assimilated into the Balanced Scorecard



**METROLINK**  
Integrated Transport. Integrated Life.

## Pillar 2: Engaging the Market



Rialtas  
na hÉireann  
Government  
of Ireland

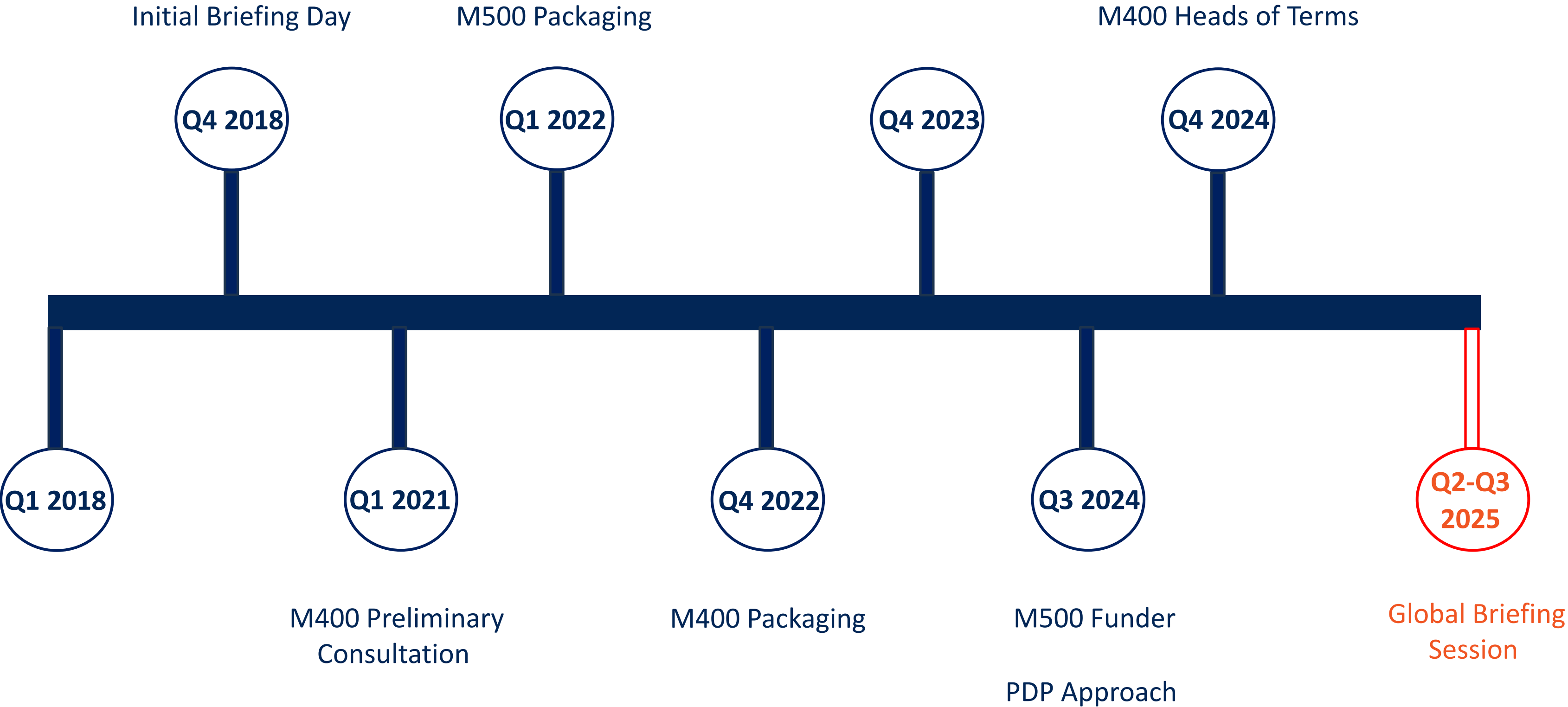
Tionscadal Éireann  
Project Ireland  
**2040**



# MARKET CHALLENGES



# PILLAR 2: METROLINK MARKET CONSULTATION TIMELINES





**METROLINK**  
Integrated Transport. Integrated Life.

## Pillar 3: Packaging the Works

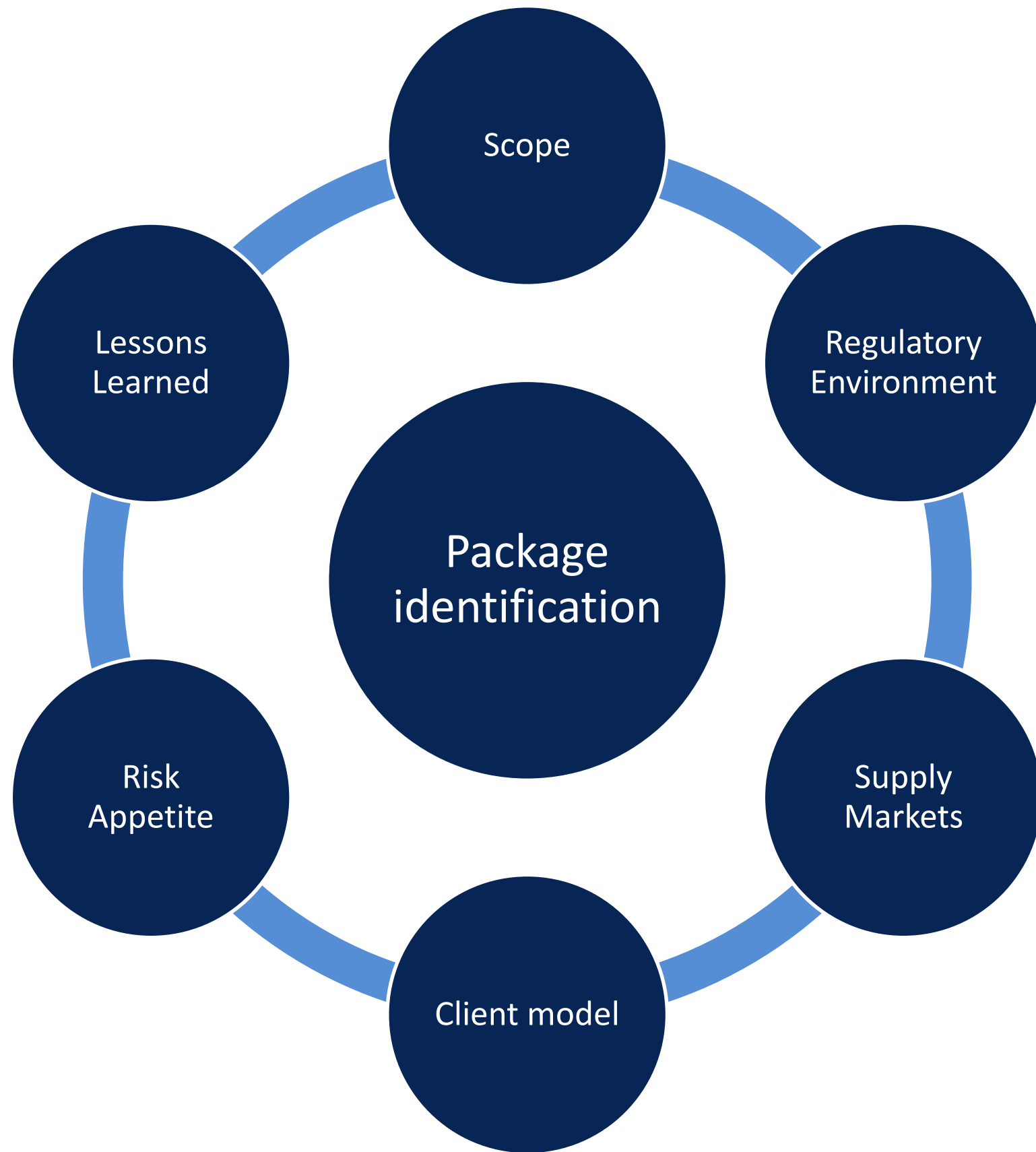


Rialtas  
na hÉireann  
Government  
of Ireland

Tionscadal Éireann  
Project Ireland  
2040



# PACKAGING: WHERE TO START?



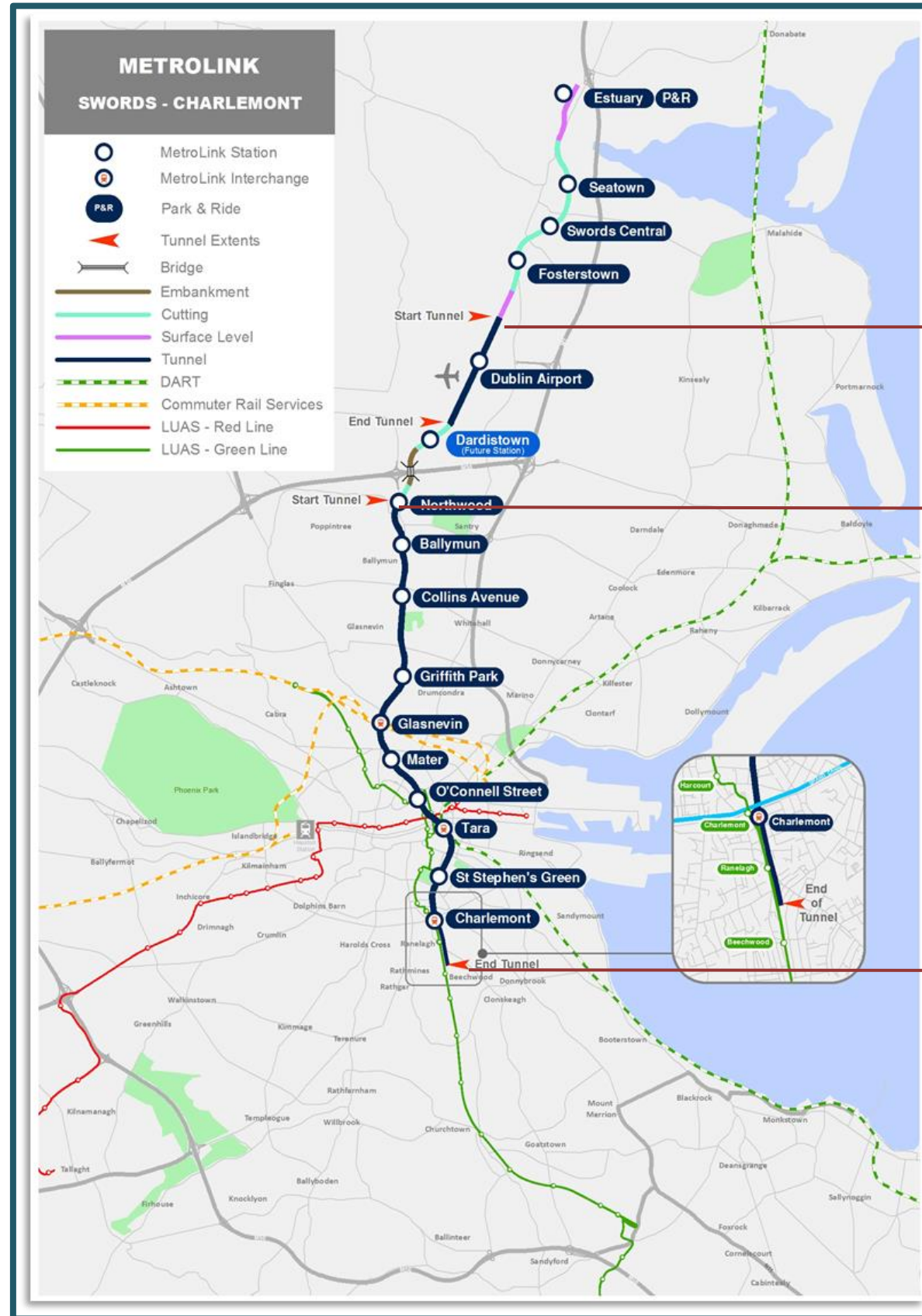
Minimise interfaces and interdependencies

Combine systems integral to GoA4

Separate heavy civils from line-wide systems and operations

Combine tunnelling and stations

# METROLINK PACKAGES



## Core Contract Packages

**Northern section:  
M403**

Surface cut + cut-and-cover sections;  
Broadmeadow viaduct; 4 stations;

**Central section:  
M402**

Tunnels and station under airport; future station box; M50 overbridge

**Southern section:  
M401**

Tunnel, evacuation shafts and 10 stations under city

**Service Delivery Partner  
DBFOM: M500**

- Design, build and finance the metro system; line-wide systems and supporting infrastructure; P+R at terminus
- Railway Systems Integration Manager
- Metro Operator & Railway Organisation
- Asset Manger

## Other scheme-wide Contract Packages

**Advance Works and Enabling**

Typically utility diversions, demolitions, archaeology and site clearance

Discrete works performed by third parties  
ESBN HV & MV connections



# M401 CONTRACT PACKAGE

- 9.5km tunnel, 8.5m ID from Northwood to Charlemont
- 10 underground stations
- Evacuation tunnel and intervention shafts
- Key Interchange station – Glasnevin



Tara  
  
 St. Stephens Green  




# M402 CONTRACT PACKAGE

- Approx. 4.5km, including 2.5km tunnel under Dublin Airport.
- Interconnecting lines to the depot
- Evacuation tunnel and intervention shafts
- 1 underground station – Dublin Airport
- Future station at Dardistown
- Viaduct over M50



Dublin Airport



Swords Central



# M403 CONTRACT PACKAGE

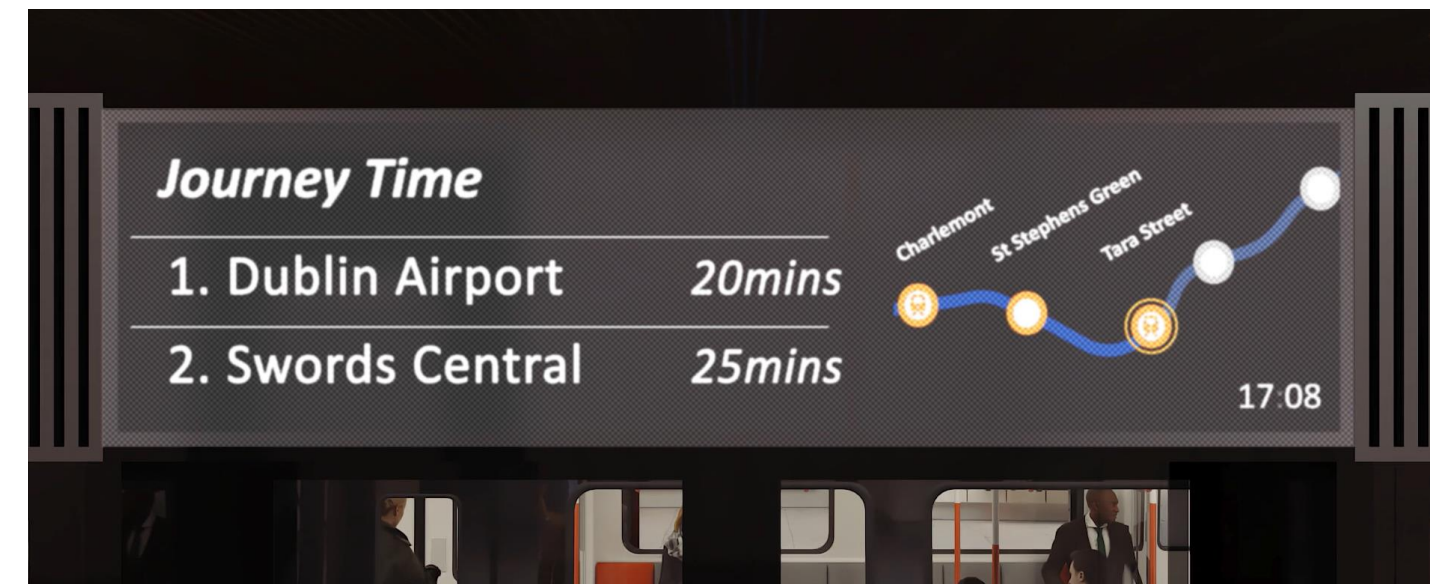
- Approx. 5.2km, retained cut, cut and cover
- 4 No. stations; 3 of which are in retained cuttings
- Viaduct over Broadmeadow and Ward rivers
- Estuary railhead





# M500 CONTRACT PACKAGE

- Design and provision of GoA4 metro system
  - Rolling stock manufacture and supply
  - Platform screen doors
- Permanent way
- CBTC Signalling
- Communications systems including railway, emergency services & passenger comms
- M&E services: tunnels and stations, ventilation and life-safety and evacuation systems
- Design and construct Dardistown depot, Estuary Back Up OCC, and Park and Ride
- Power distribution
- Station MEP fit out
- Operate and maintain MetroLink





**METROLINK**  
Integrated Transport. Integrated Life.

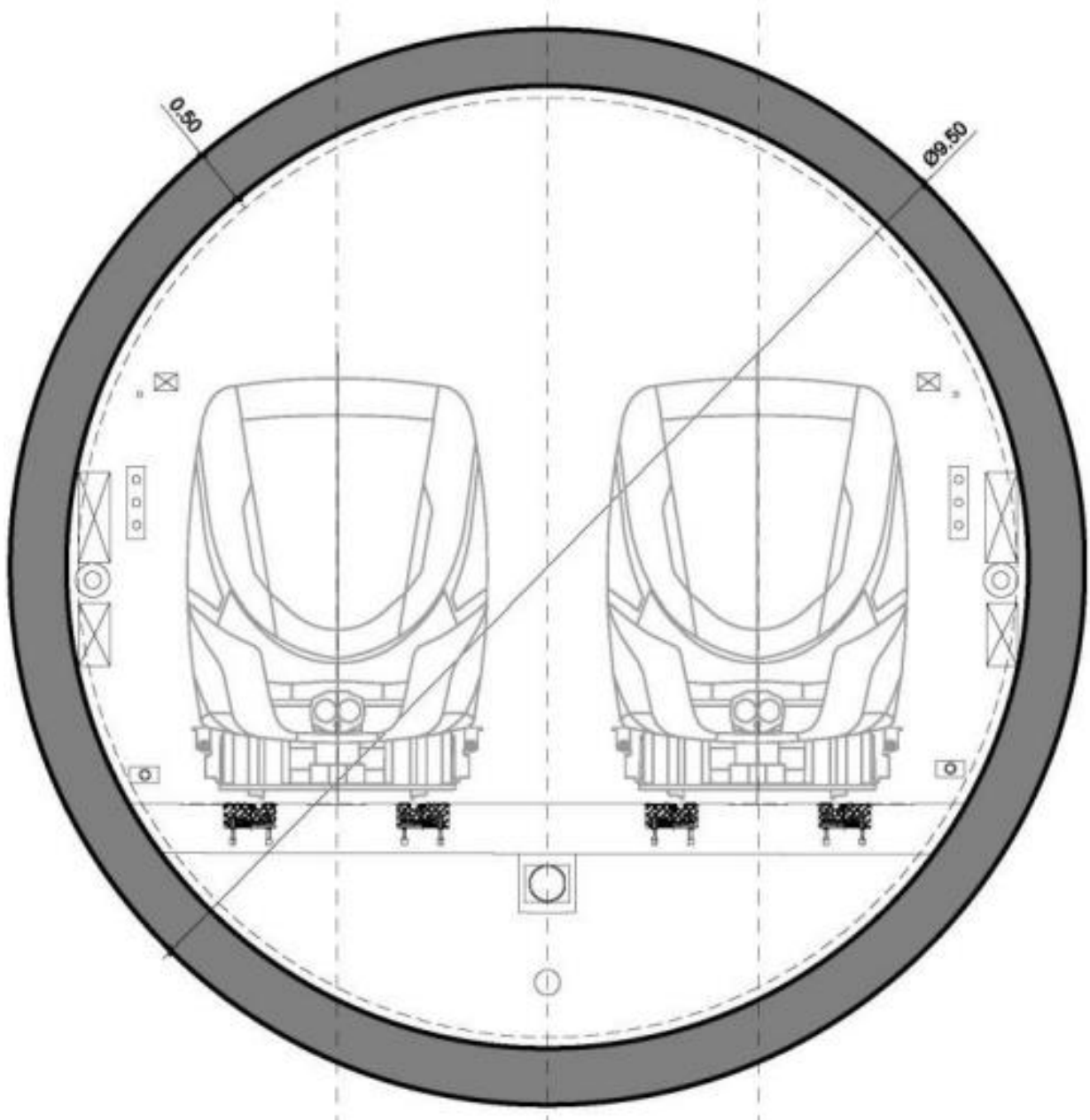
# Construction Methodologies



Rialtas  
na hÉireann  
Government  
of Ireland

Tionscadal Éireann  
Project Ireland  
2040

# TUNNELS



Dublin Airport  
South Portal



A typical  
slurry  
treatment  
plant

# UNDERGROUND STATIONS

- All stations follow the same architectural design vision with common elements:
  - Skylights and open access
  - Linear circulation to platforms
  - Iconic canopies at station entrances
- Typically 112m long x 25m wide x 20m deep
- Platforms are 65m long accessible by stairs, lifts and escalators
- Unstaffed ticket validation (based on Luas)



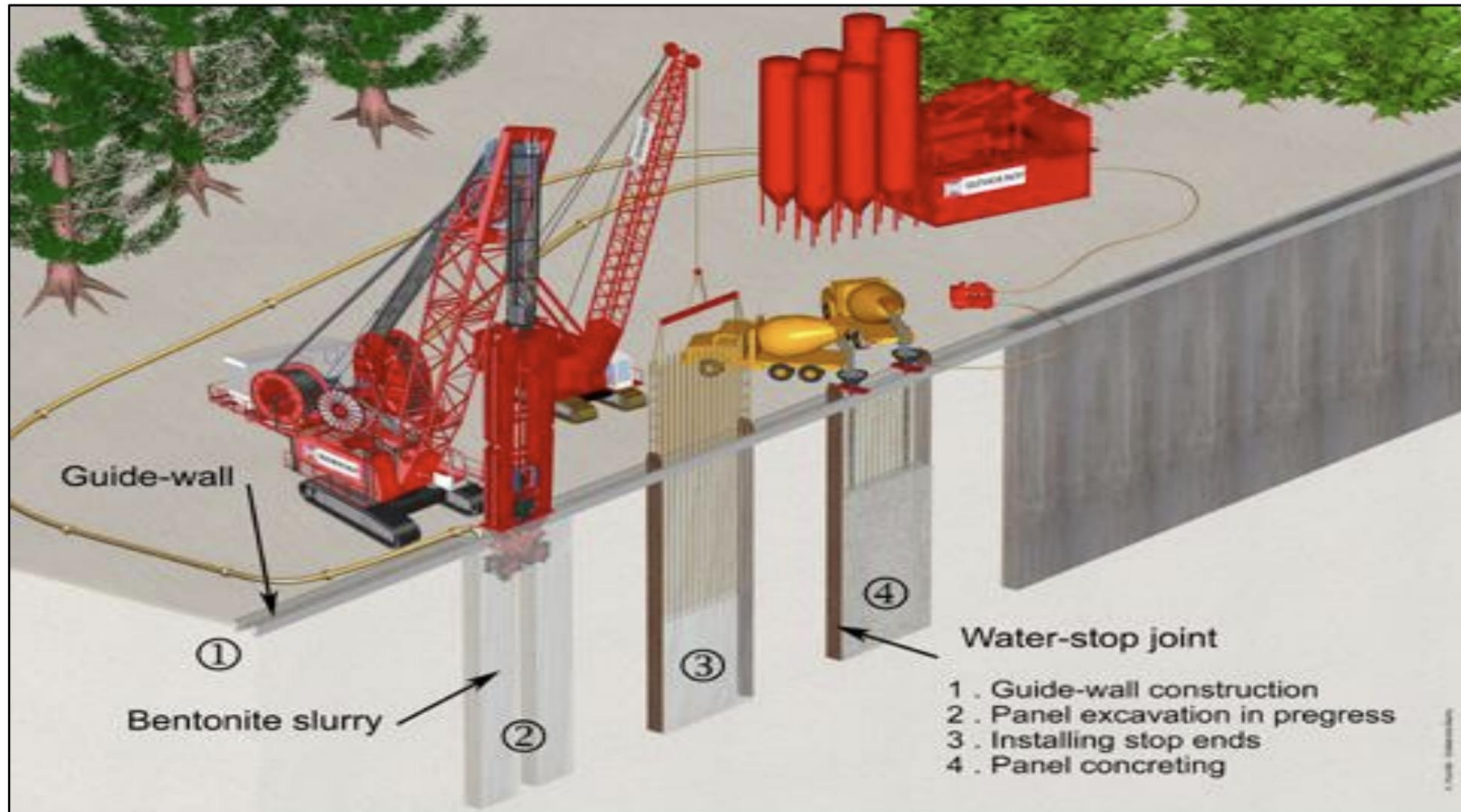
High Quality  
Passenger  
Experience



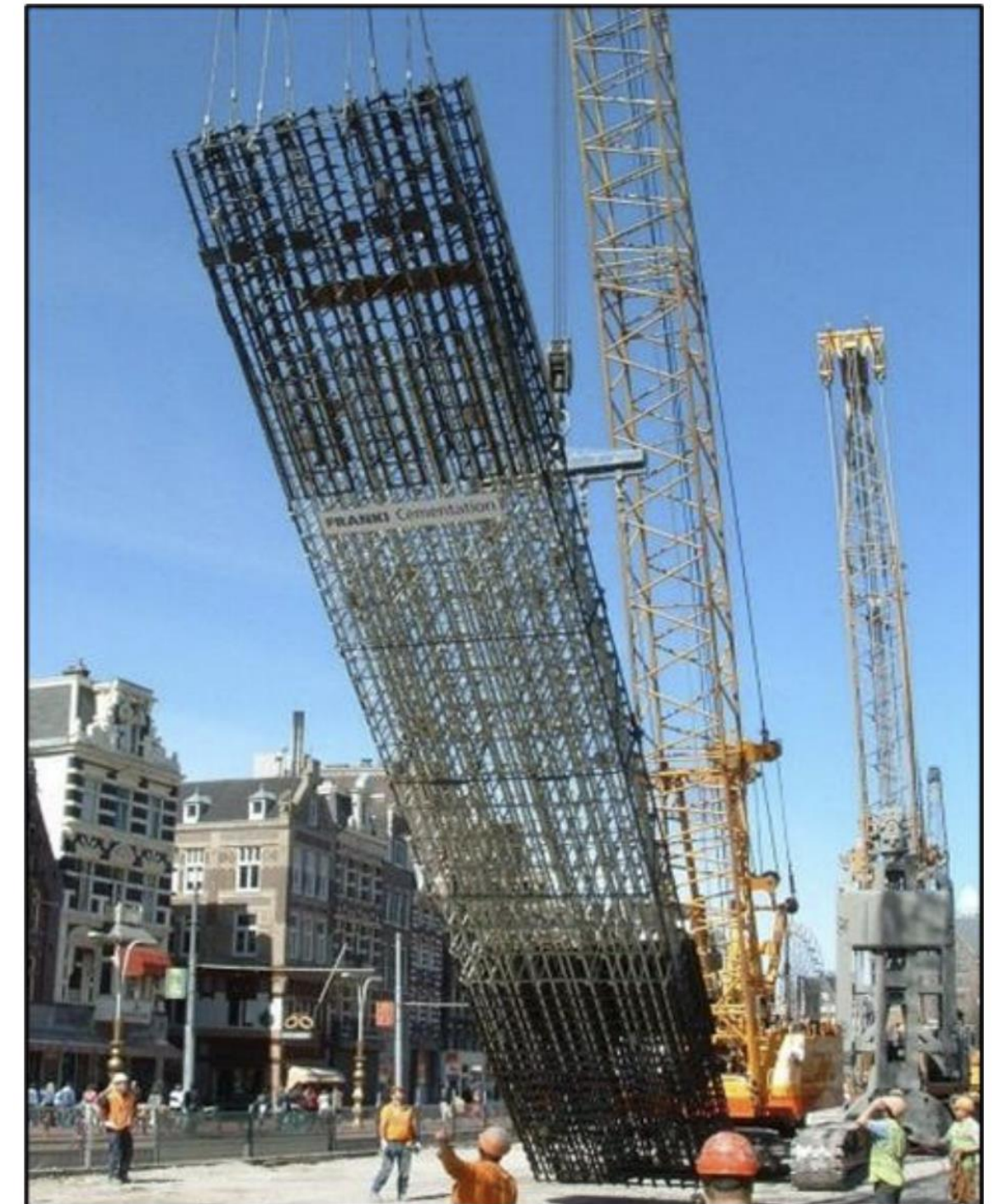
Intuitive  
Wayfinding



# UNDERGROUND STATIONS – DIAPHRAGM WALLING



Typical D-wall operations



Typical reinforcement cage for D-wall panel

# GLASNEVIN STATION – KEY CHALLENGES



Major interchange station

Critical interface with Irish Rail

Works adjacent to the Royal Canal

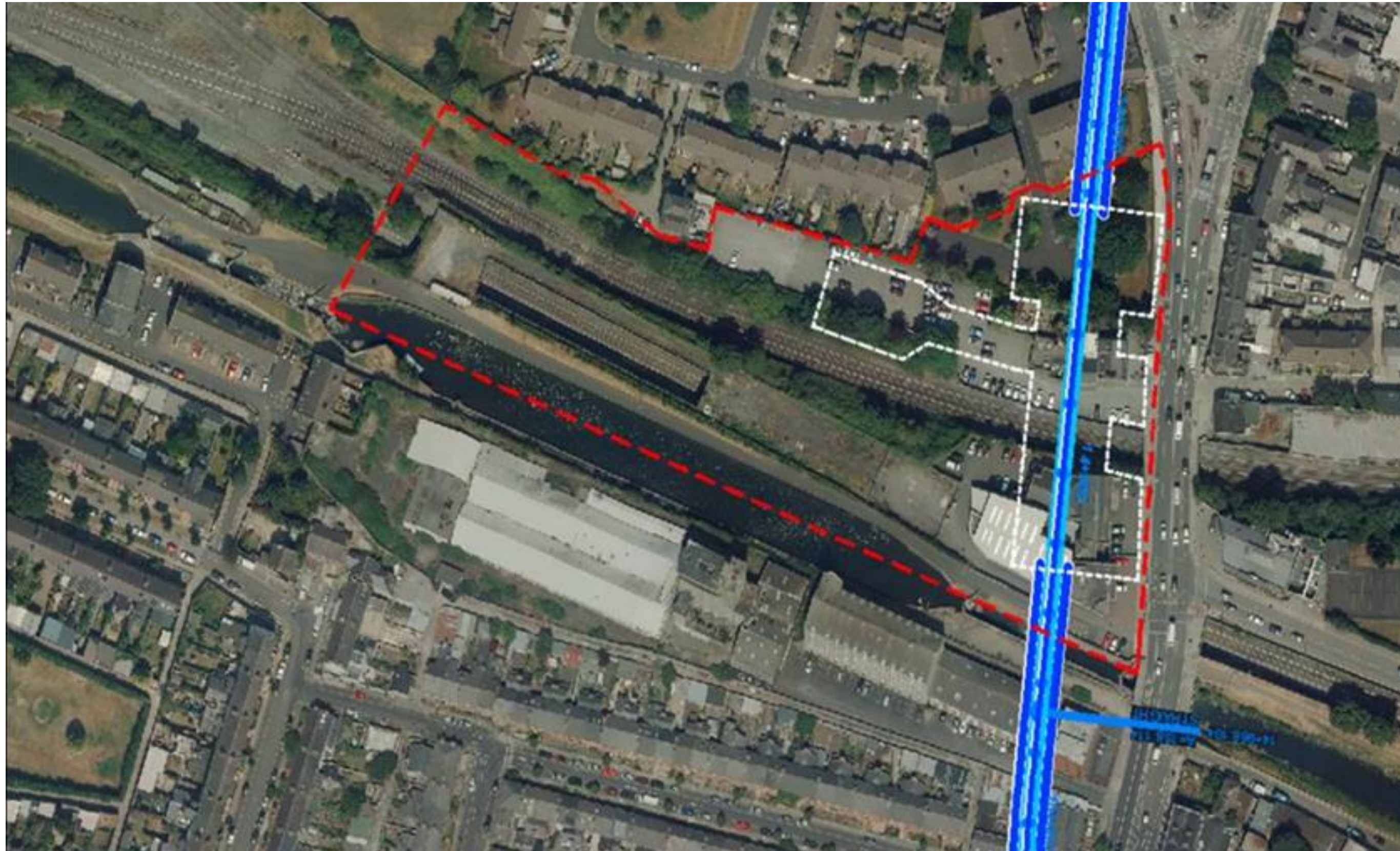
Very confined site

Architectural Heritage Constraints

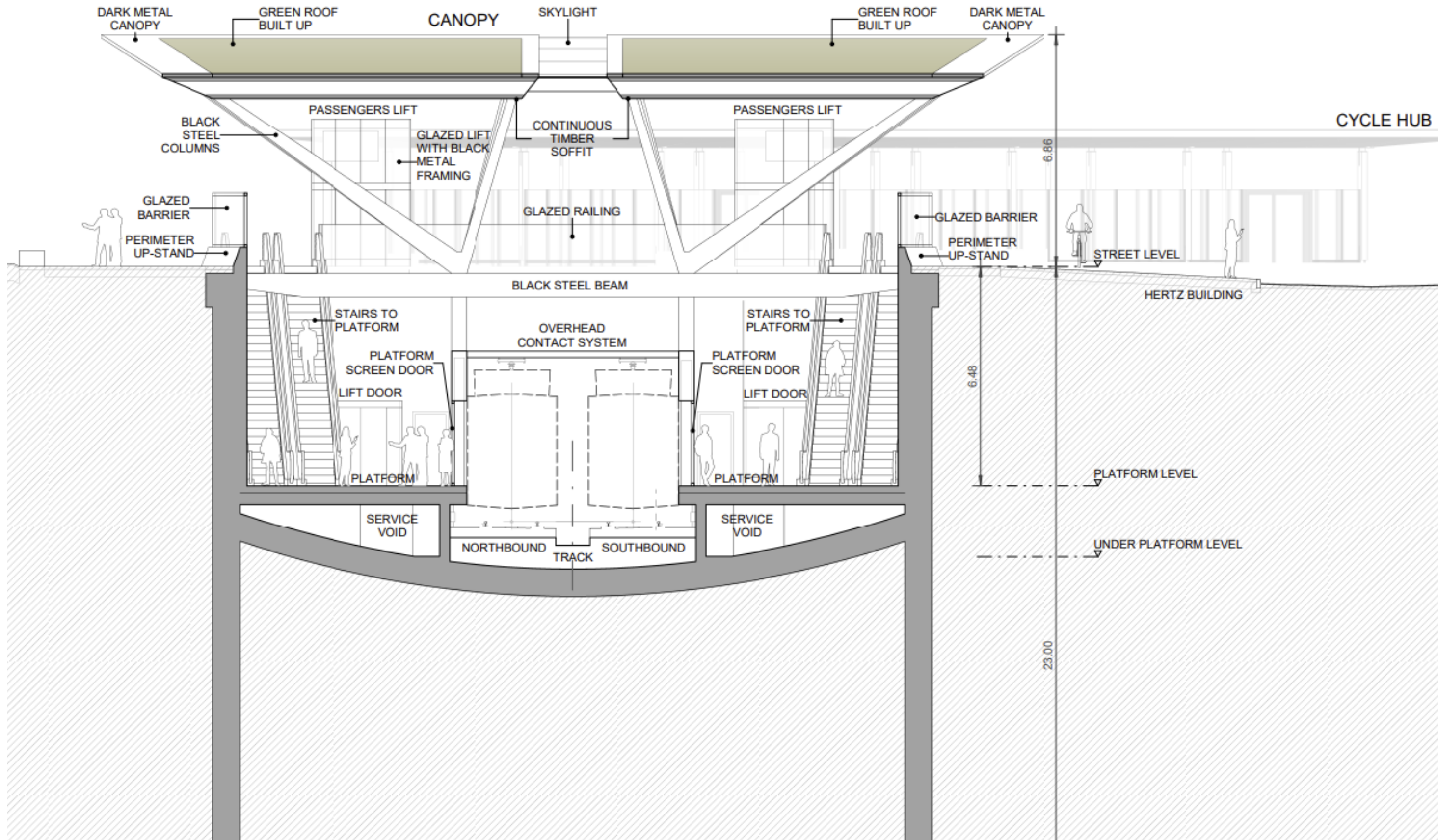
Phased closure of Irish Rail lines to facilitate works



# GLASNEVIN STATION – KEY CHALLENGES



# RETAINED CUT STATIONS





Scheme Visualization





**METROLINK**  
Integrated Transport. Integrated Life.

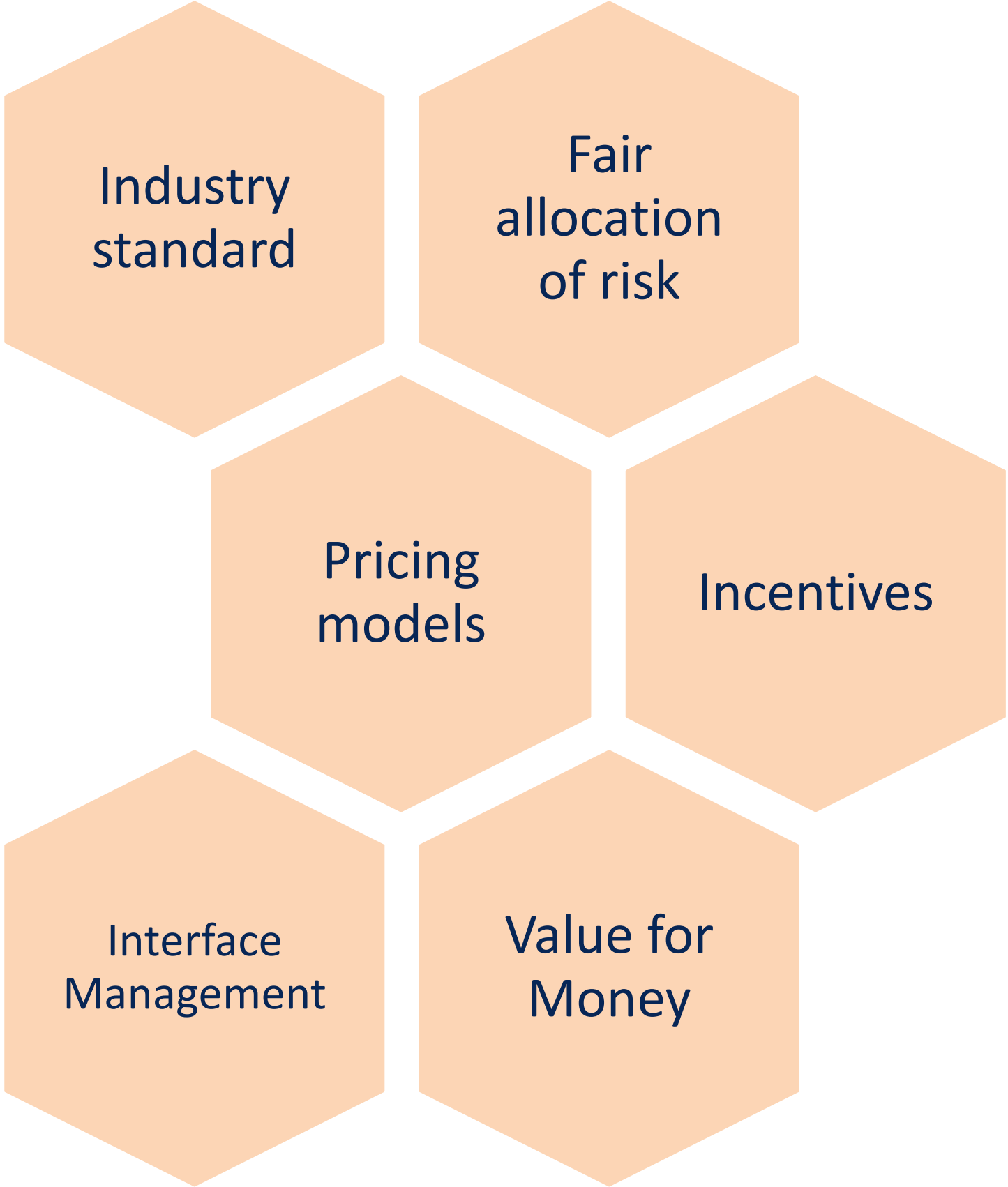
# Pillar 4: Contract Approach



Rialtas  
na hÉireann  
Government  
of Ireland

Tionscadal Éireann  
Project Ireland  
**2040**

# CONTRACT APPROACH - CONSIDERATIONS





**METROLINK**  
Integrated Transport. Integrated Life.

## Pillar 5: Route to Market



Rialtas  
na hÉireann  
Government  
of Ireland

Tionscadal Éireann  
Project Ireland  
2040



# PROCUREMENT

- Mix of routes to market established
  - Frameworks for Advanced and Enabling Works
  - European Union (Award of Contracts by Utility Undertakings) Regulations 2016 (S.I. 286/2016) for M400 Works
  - Regulation 1370/2007 for M500 service delivery partner
- Commercial Directorate has been established
  - Policy and Assurance
  - Procurement Management
  - Procurement Operations
- Balanced scorecard requirements and critical success factors embedded in the tender and contract documents



**METROLINK**  
Integrated Transport. Integrated Life.

## Pillar 6: Monitoring Performance

# MONITORING PERFORMANCE

- Key Performance Indicators and incentivization
- Measurement of supply chain performance:
  - Correct behaviours and outcomes
  - On-going relationship management
  - Payment mechanism in the M500 contract
  - Benefits Realisation monitoring and evaluation plan
- Learning Legacy for future major programmes in Ireland



Surface level station platform at Estuary



Retained cut station, Seatown

# METROLINK


**There is no competing project, no credible alternative and no cheaper time to build MetroLink, Ireland's first mega-project.**


# METROLINK

Integrated Transport. Integrated Life.

 [info@metrolink.ie](mailto:info@metrolink.ie)

 [www.metrolink.ie](http://www.metrolink.ie)

 **Freephone:** 1800 333 777  
Mon-Fri, 8.30am-5.30pm

 **MetroLink**  
Transport Infrastructure Ireland  
Parkgate Business Centre  
Parkgate Street  
Dublin 8  
D08 DK10

 [@metrolink](https://www.linkedin.com/company/metrolink)