



# James Rennie Medal Final

Monday 24 March 2025

# Programme

---

18:00	Registration and welcome refreshments
18:30	Introduction – Prof Jim Hall, President, ICE
18:35	History of James Rennie
18:40	Introduction of the finalists and chair of Q&A sessions Séan Harris, deputy director general and director of membership <i>The finalists will have 20 minutes to present their report and 10 minutes to answer questions from the judging panel and audience.</i>
18:45	Finalist presentation – Carys O’Shea
19:05	Q&A
19:15	Finalist presentation – Capt James Wallis
19:35	Q&A
19:45	Finalist presentation – Emma McGregor
20:05	Q&A
20:15	Interval
20:30	Vote of thanks and winner announced Jacki Bell, membership development officer, ICE North and chair, James Rennie Judging Panel
20:40	Event close for online participants Drinks reception for in person participants
21:40	Event close

# Introducing the Finalists

---

## Carys O'Shea CEng MICE

senior design coordinator, J. Murphy and Sons



Carys is a Chartered Civil Engineer (CEng) with extensive experience in design coordination, sustainability, and construction management. Currently a senior design coordinator at J. Murphy & Sons Ltd, she oversees multi-site projects and has led groundbreaking Earth Friendly Concrete trials, achieving a world record for the largest single pour of cement free concrete – resulting in a reduction of 82-ton of CO2. Her expertise spans permanent works and temporary works design management, tunnelling, and site management on major infrastructure projects, including London Power Tunnels 2.

## Capt James Wallis CEng MICE MInstRE RE

second in command specialist team royal engineers (Civil Engineer), Corps of Royal Engineers (British Army)



James joined the British Army in 2018, commissioning into the Royal Engineers. His early roles involved providing engineering solutions and advice to battlefield commanders including on operations in Eastern Europe, as well as project management in his unit's headquarters. In 2022 he began professional engineer training before undertaking an 18-month secondment to Hinkley Point C, first as a construction delivery manager and subsequently as a temporary works designer. He now works within the Army's specialist infrastructure delivery and consultancy teams.

## Emma McGregor CEng MICE

senior engineer, Tony Gee and Partners LLP



Emma began her career as a graduate geotechnical engineer with Tony Gee and Partners in Glasgow. With expertise in the Power & Energy renewable sector, namely onshore wind, Emma now leads the technical delivery and management of projects, from feasibility & design to construction & operation. Career highlights include her influence in the successful delivery of Viking Wind Farm in Shetland, namely the design & construction of "floating" New Sandwater Road, 103 no. turbine foundations, and role as geotechnical clerk of works.

# Chairs and judges

---

## Jacki Bell

membership development officer, ICE North and chair, James Rennie Judging Panel



Jacki is currently membership development officer for ICE covering West Yorkshire and York. Previous to this she has enjoyed a varied career working in academia, non-governmental client bodies, local authorities, waste management, and consultancy. She has also enjoyed several roles within the ICE as regional director for Scotland, London and the South West. She always enjoys listening and learning from the James Rennie finalists.

## Dr Gopal Srinivasan

associate director, Arup

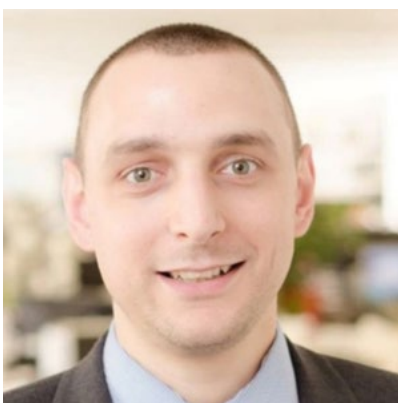


Gopal is an award-winning bridge and civil structures engineer. He has worked on major infrastructure projects across UK, Europe, India, Middle East and Far East.

He has worked on major infrastructure projects in the UK including HS1, HS2, Stratford City, London 2012 Olympic and Paralympic Games. He is member of a number of international technical commissions and working parties and is Fellow of the Institution, an SCE, reviewer and member of the Awards Panel.

## Giorgio Giuliani

geotechnical design lead – offshore wind, COWI



Giorgio Giuliani was appointed geotechnical design lead - offshore wind at COWI in September 2024. Prior to this, he spent one year in 2H Offshore and 8.7 years in Ramboll. He is a Chartered Engineer affiliated with the ICE and IMarEST, RoGEP advisor with a Master of Philosophy in Engineering from the University of Aberdeen. Giorgio is lead reviewer and the chair of the Offshore Engineering Society of London, a Specialist Knowledge Society of the Institution of Civil Engineers.

# Chairs and judges

---

## Eamonn Slevin

programme director, Costain Ltd.



Eamonn has served on both the ICE's Initial Professional Development Panel and the ICE Collaborative Advisory Board. He also sits on the JRMA Panel.

Eamonn is the Smart Motorway Alliance (SMA) Programme Director at Costain and is the Alliance's Assembly Director. He leads the programme teams, working closely with National Highways, Alliance partners and the supply network in this national portfolio of schemes.

Eamonn is also currently working for the Costain Executive Board exploring significant adjacent growth markets. His career spans over 20 years, across a wide range of projects in the fields of highways, water and process, and drainage and infrastructure. He handles training Costain graduates and mid-career leaders as well as being an SCE.

He is also a judge and member of the James Rennie Medal Panel and was a previous James Rennie Medal Award winner in 2012.

## Craig Small

managing director, Kier Nuclear & Energy



Craig has more than 25 years' experience as a leader in the civil engineering industry working on a diverse range of projects in the UK and overseas.

His current portfolio includes projects in the nuclear sector, in support of the UK's Continuous at Sea Deterrent, the drive to net zero carbon energy production and distribution.

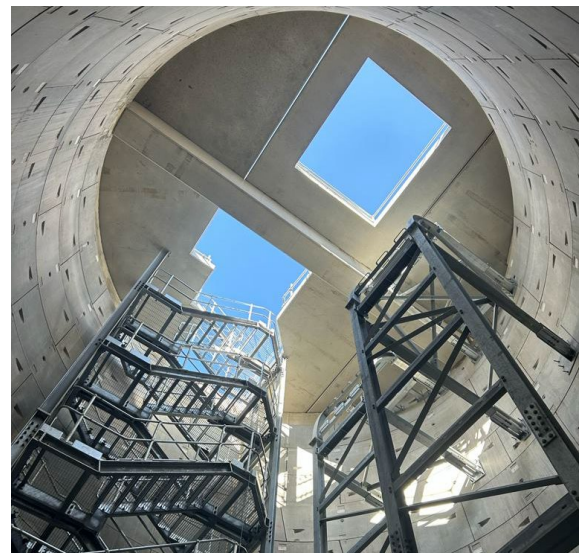
Previously, Craig served in the British Army and he's a proud sponsor of Kier's Armed Forces network. In 2022, Craig won the Engineering Excellence Award at the British Ex-Forces in Business Awards.

# Carys O'Shea's Project

Carys will discuss her role in the London Power Tunnels Phase 2 (LPT2), a £1 billion National Grid project designed to strengthen London's electricity network with a 32.5km underground cable tunnel from Wimbledon to Crayford. As the most significant upgrade since the 1960s, LPT2 plays a key role in supporting the increasing integration of renewable energy into the grid.



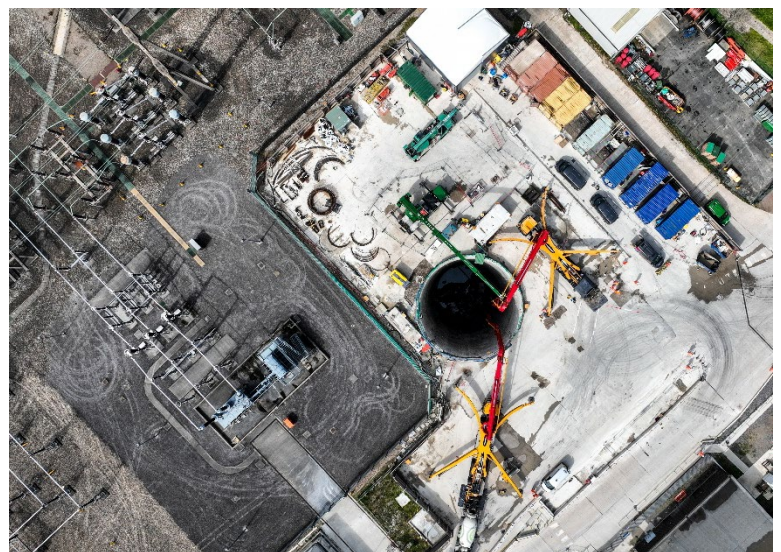
*LPT2 tunnel completed, with bracketry installed ready for the cables to be pulled in and fixed.*



*LPT2 - Photo taken from the base of the shaft during head house construction, with the opening and cable bracketry in the shaft ready for the cable pulling.*



*LPT2 - Tunnel Boring Machine (TBM) dropped down the shaft in preparation for the TBM launch.*



*LPT2 - Drone shot taken at Hurst during the largest cement free pour in the world.*

# Capt James Wallis' Project

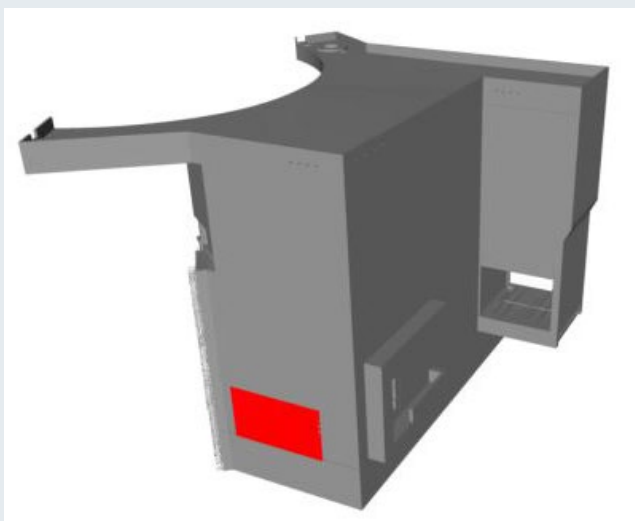
James will present on his experience working on the nuclear island of Hinkley Point C. As part of the main civil works contract, he was responsible for the delivery of the HK fuel building, a large reinforced concrete wall and slab structure. He will discuss the challenges of constructing the building, which is surrounded by a wall designed to provide protection from airplane or missile attacks. He will also explore how he has applied the lessons learned to his Army Career.



*Wall 206 after shutter leak occurred*



*Typical APC wall section*



*3D Pour model of the HK fuel building at HPC. Wall 206 is highlighted*



*Crayford slabs on a pit bottom HK Fuel building under construction at HPC (reactor building is to right of image).*

# Emma McGregor's Project

---

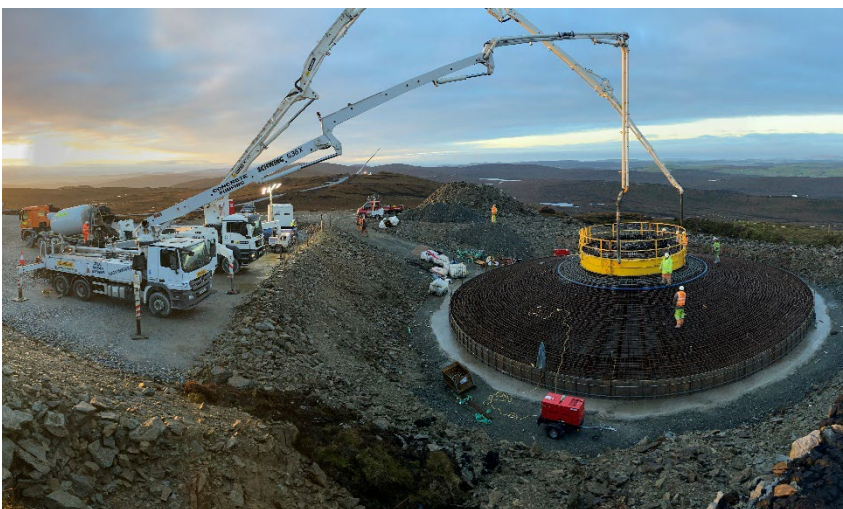
Emma will present on her experience working on the Viking Wind Farm, a 103-turbine, 443MW onshore wind farm on mainland Shetland. Now operational, this pioneering development is anticipated to be one of the most productive wind farms in the world, powering 500,000 homes. She will discuss the design and construction challenges faced due to the project's remote and sensitive upland peat environment, including the risk of peat instability.



*Viking Wind Farm Ground Investigation*



*Viking Wind Farm Construction of New Sandwater Road*



*Viking Wind Farm – WTG Foundation Construction  
Concrete Pour*



*Viking Wind Farm –  
Operational Turbines*